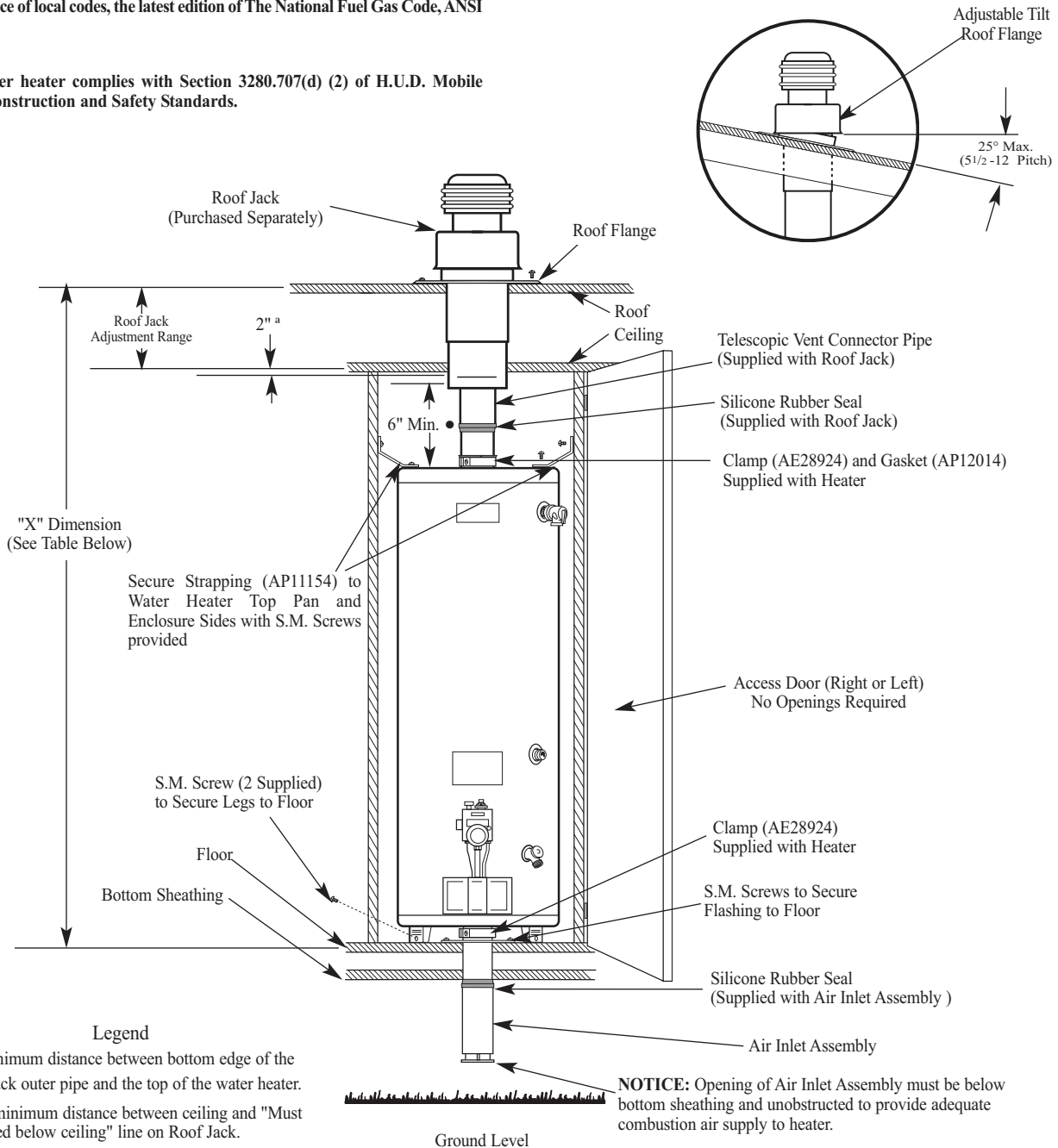


This appliance must be installed in accordance with the Manufactured Home Construction and Safety Standard (Title 24, CFR; Part 3280), the following instructions, local codes and utility company requirements governing the installation of water heaters in manufactured homes (mobile homes), and/or in the absence of local codes, the latest edition of The National Fuel Gas Code, ANSI Z223.1.

NOTICE - All sizes of Roof Jacks have an adjustable tilt Roof Flange to accommodate installation on a pitched roof. Maximum roof pitch is 5 1/2 - 12. For roof pitches greater than 5 1/2 - 12, the use of a "wedge" under the roof flange is acceptable provided it is sealed and secured.

This water heater complies with Section 3280.707(d) (2) of H.U.D. Mobile Home Construction and Safety Standards.



- 6" Minimum distance between bottom edge of the roof jack outer pipe and the top of the water heater.
- ^a 2" is minimum distance between ceiling and "Must be installed below ceiling" line on Roof Jack.

Roof Jack Sizing Table

Roof Jack Kit Part No.	Roof Jack ONLY Part No. §	"X" Dimension (See Illustration)	Roof Jack Adjustment Range (See Illustration)
AP12032B*	AP12118B*	98" Min./126" Max.	16" Min./ 32" Max.
AP12032C*	AP12118C*	112" Min./154" Max.	30" Min./60" Max.
AP12032D*	AP12118D*	130" Min./ 189" Max.	48" Min./95" Max.
AP12032E▲	AP12118B*	94" Min./ 106" Max.	12"

* Adjustable Length Roof Jacks

▲ Fixed Length Roof Jacks

• Roof Jack Kits contain specified Roof Jack AND Air Inlet Assembly.

§ These Part No.'s are for Roof Jack ONLY.

NOTICE: 24" Minimum distance from the top of the water heater to the ceiling.

NOTICE - A Roof Jack Extension Kit (Part Number AP12021) is recommended for roof pitches of 5 1/2 -12 or greater, or for installations where local codes require the Roof Jack to be installed above the peak of the roof. Installation instructions are provided with the kit.